

# MERKEZİ KAYIT İSTANBUL

CSD of Türkiye

REAL ESTATE BASED AND DEVELOPING FINANCIAL  
INSTRUMENTS INFORMATION SYSTEM

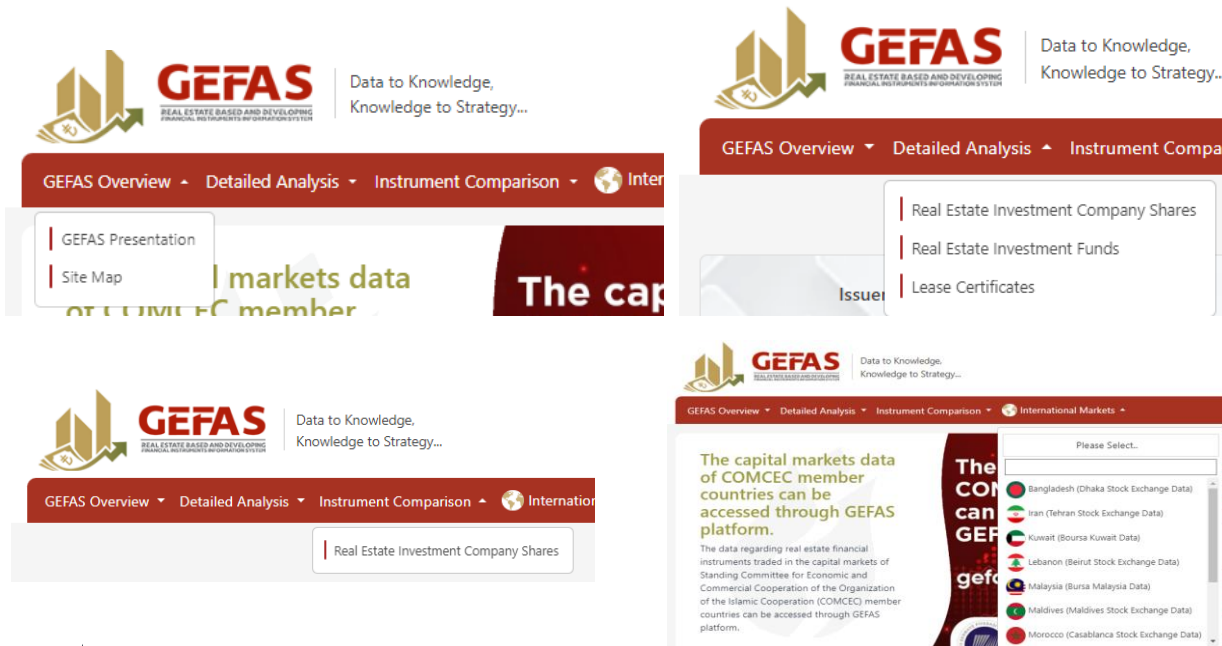


MERKEZİ KAYIT  
İSTANBUL

### What is GEFAS?

- » GEFAS aims to improve transparency and efficiency in capital markets by facilitating access to product, issuer and performance information on Lease Certificates, Real Estate Investment Company Shares and Real Estate Investment Funds traded in Borsa Istanbul, hence supporting diversification of investors' investment alternatives in real estate through capital market instruments.
- » Investors will be able to access graphs regarding the closing price, transaction volume and return information of the products via GEFAS, and will also have the opportunity to compare REITs based on this information. Investors can view weekly, monthly, quarterly (3-month), 6-monthly, Year-to-date, 1-year, 3-year and 5-year price, transaction volume and return data of REITs, REIFs and Lease Certificates in separate graphs on TRY and USD basis.
- » Information on real estate-based capital market instruments traded on Borsa Istanbul is shared daily at GEFAS. GEFAS, which was created with the vision of following financial innovations and developing financial instruments with fast and detailed analysis, aims to increase the services it will offer to investors by diversifying the products traded in developing financial markets in the future.
- » The capital markets data of COMCEC member countries can be accessed through GEFAS platform.

- » Real Estate Investment Company Shares (REIC Shares)
- » Real Estate Investment Fund (REIT)
- » Lease Certificates
- » International Markets





### Lease Certificates

A lease certificate is an interest-free capital market instrument issued by an asset leasing company in order to finance the assets that are acquired or leased, and which entitles its holders to the revenues attained from such assets in proportion to their shares. The Lease Certificates domestically issued by Turkish Treasury and Asset Lease Companies are electronically held in dematerialized form on beneficial owner basis at CSD of Türkiye.



### Real Estate Investment Company (REIC) Shares

REIC is a type of capital market institution which is founded in order to issue its shares for the purpose of operating and managing a portfolio composed of real estates, real estate projects, real estate-based rights, infrastructural investments and services, capital market instruments and other assets, rights and instruments. REIC Shares domestically issued by REICs are electronically held in dematerialized form on beneficial owner basis at CSD of Türkiye.



### Real Estate Investment Fund (REIF)

REIF is an asset without a legal entity and established within the fund rules by portfolio management and real estate portfolio management companies to manage the portfolios comprised of assets and transactions specified in the communique, with the money collected from qualified investors in return for fund units. REIFs domestically issued by Asset Management Companies are electronically held in dematerialized form on beneficial owner basis at CSD of Türkiye.

### Detailed Analysis

- Real Estate Investment Company Shares
- Real Estate Investment Funds
- Lease Certificates
- Real Estate Certificates ★

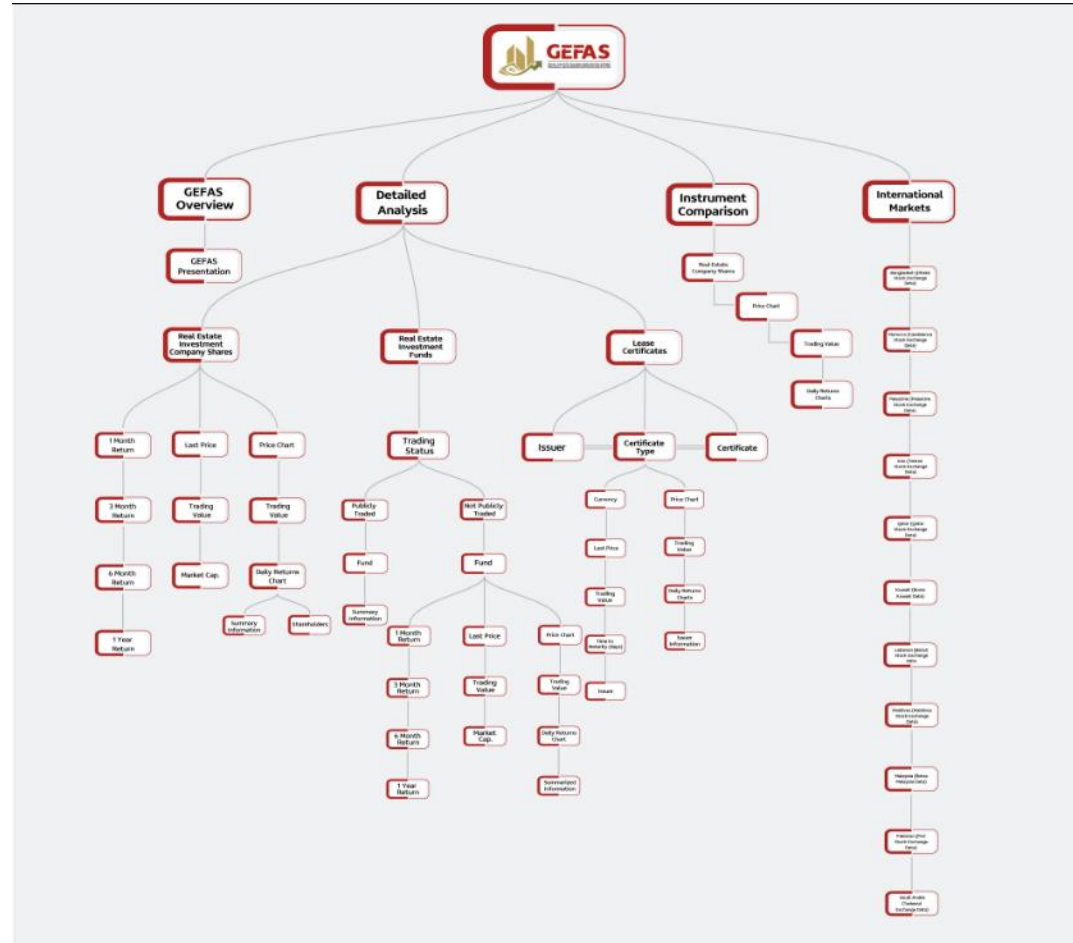
### Instrument Comparison

Real Estate Investment Company Shares



Only general information is provided for Real Estate Certificates.

» Users can access GEFAS site maps from the home screen.



# TRADE REPOSITORY SERVICES

## REAL ESTATE INVESTMENT COMPANY SHARES

Regarding REIC Shares, last price, trading value, market capitalization information, 1-month, 3-month, 6-month, 1-year return data and the historical data of last price, trading volume and return covering weekly, monthly, quarterly (3-month), 6-month, Year-to-Date, 1-year, 3-year and 5-year periods consecutively are shared in USD and TRY currencies.

### AKMGYE - AKMERKEZ GAYRİMENKUL YATIRIM ORTAKLIĞI A.Ş.

Last Price (TRY)	Trading Value (TRY)	Market Cap. (TRY)
151,800	15.802.981,10	5.656.675.200

Last Value Date: 11/30/2023

1 Month Return  
-13,65% ↓

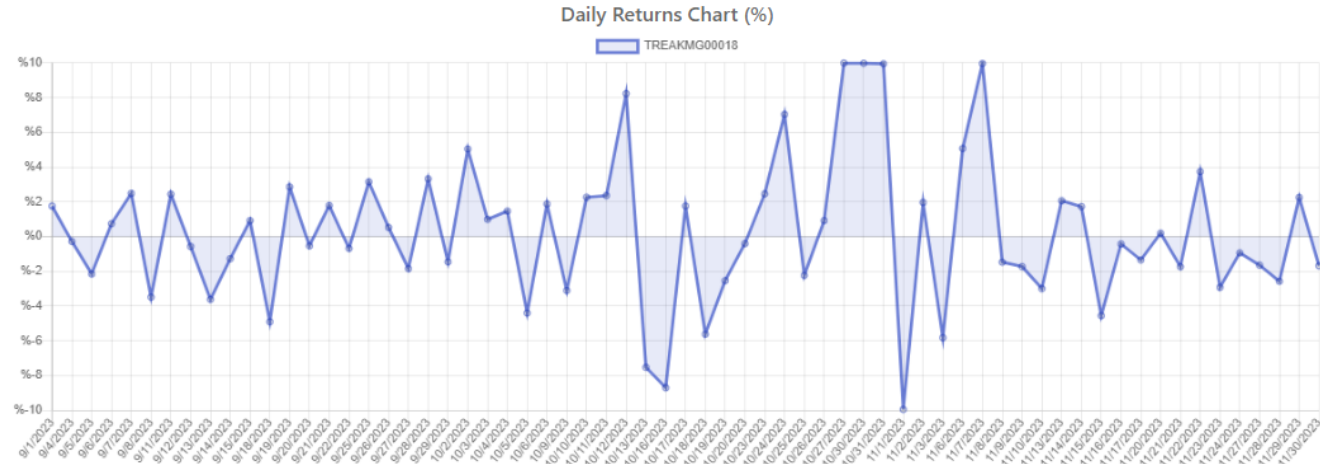
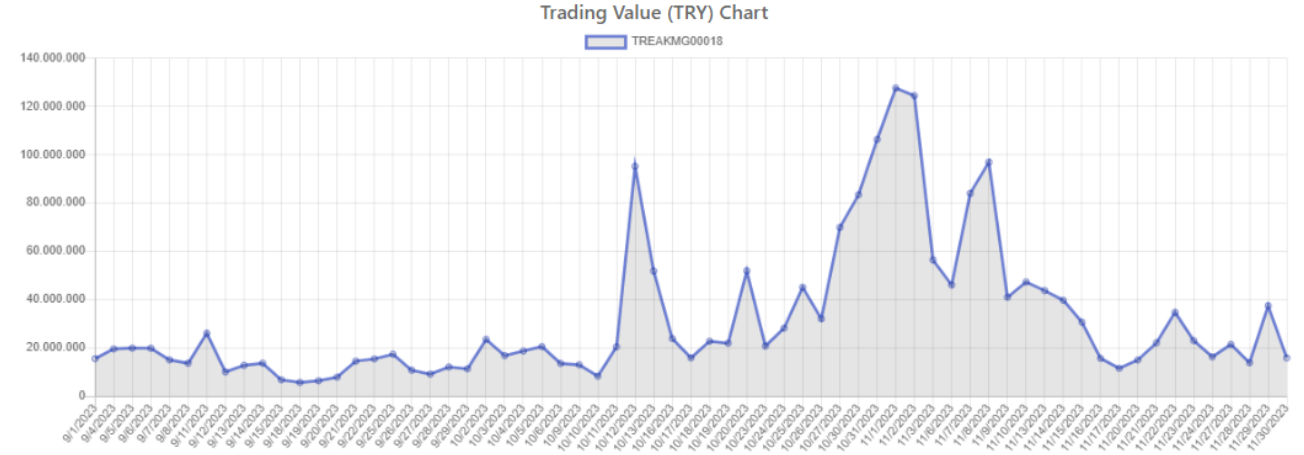
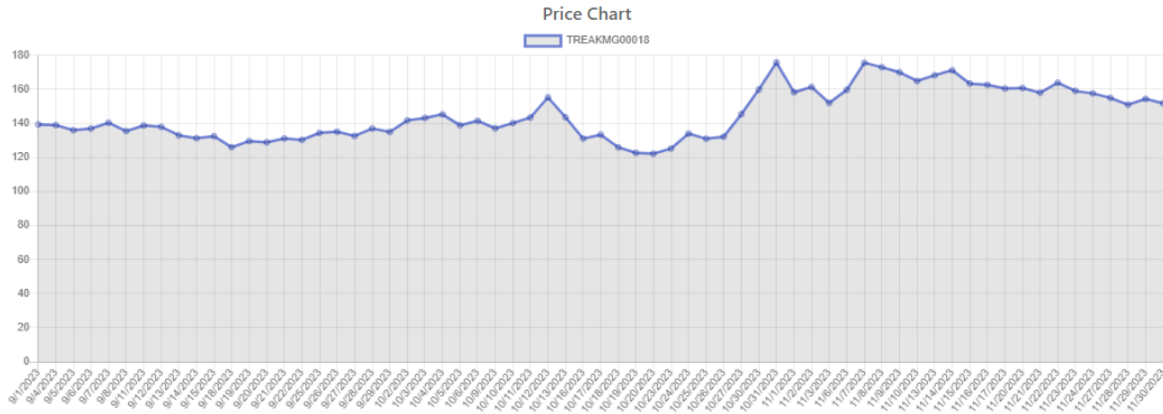
3 Month Return  
+8,89% ↑

6 Month Return  
+102,40% ↑

1 Year Return  
+103,75% ↑

TL

Weekly 
  Monthly 
  for 3 months 
  for 6 months 
  Year to date 
  1 Year 
  3 Years 
  5 Years



# TRADE REPOSITORY SERVICES

## REAL ESTATE INVESTMENT FUND

Regarding REIFs, last price, trading value, fund total value information, 1-month, 3-month, 6-month, 1-year return data and the historical data of last price, trading volume and return covering weekly, monthly, quarterly (3-month), 6-month, Year-to-Date, 1-year, 3-year and 5-year periods consecutively are shared in USD and TRY currencies.

### RPAVS.F1 - Re Pie Gayrimenkul Ve Girişim Serm.Portföy Yönetimi A.Ş. Avrasya Stratejik Gayrimenkul Yatırım Fonu

Last Price (TRY) 4.384,000 | Trading Value (TRY) 4.384 | Fund Total Value (TRY) 8.768.000.000,000

Last Value Date: 11/30/2023

Last 1 Month Proceeds  
**+1,46%** ↑

Last 3 Months Proceeds  
**-8,12%** ↓

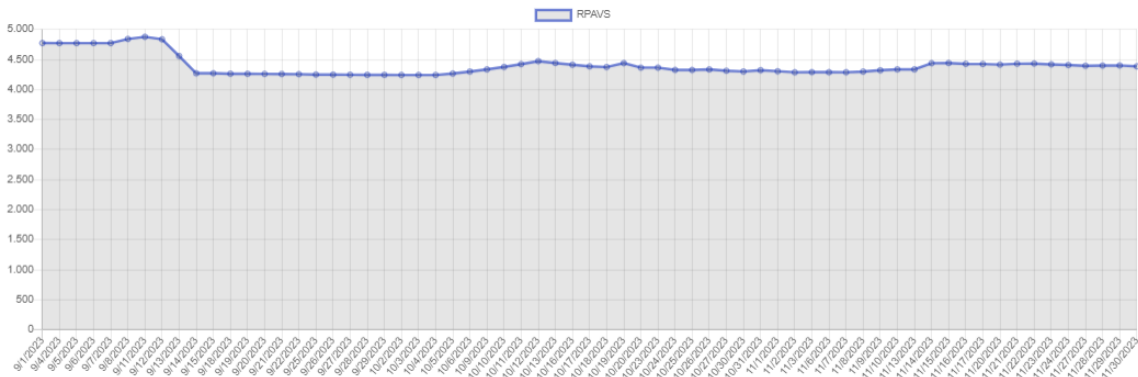
Last 6 Months Proceeds  
**+26,15%** ↑

Last 1 Year Proceeds  
**+35,99%** ↑

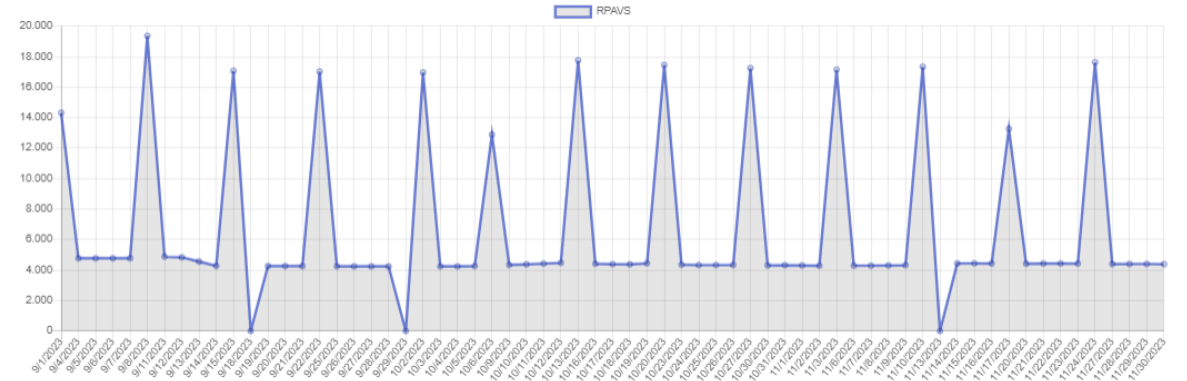
TL

Weekly 
  Monthly 
  for 3 months 
  for 6 months 
  Year to date 
  1 Year 
  3 Years 
  5 Years

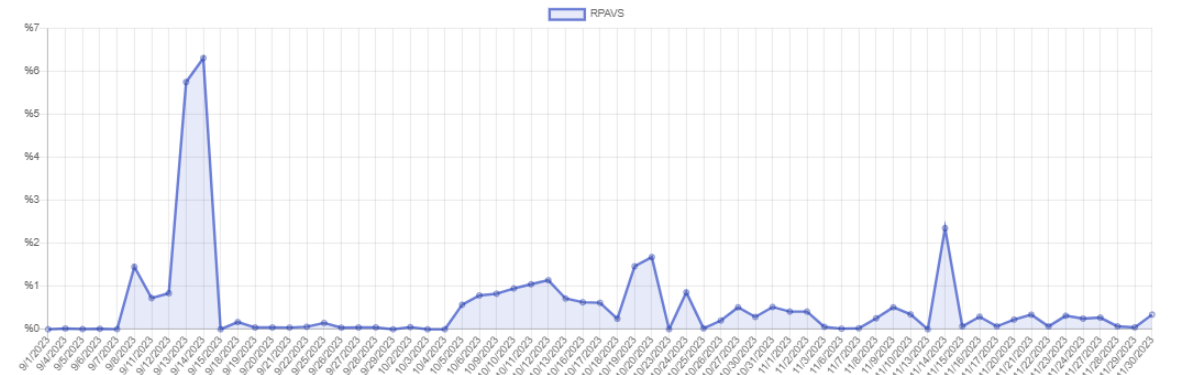
Price Chart



Trading Value (TRY) Chart



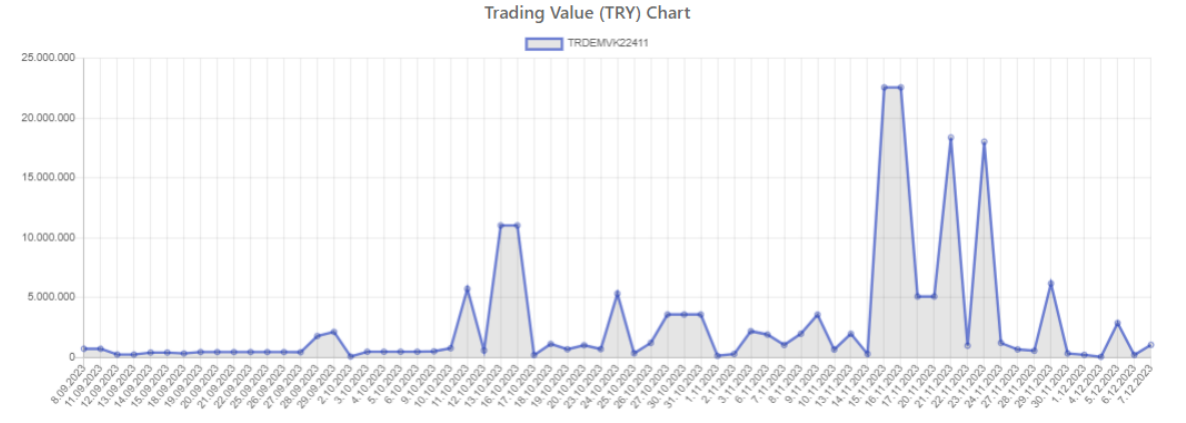
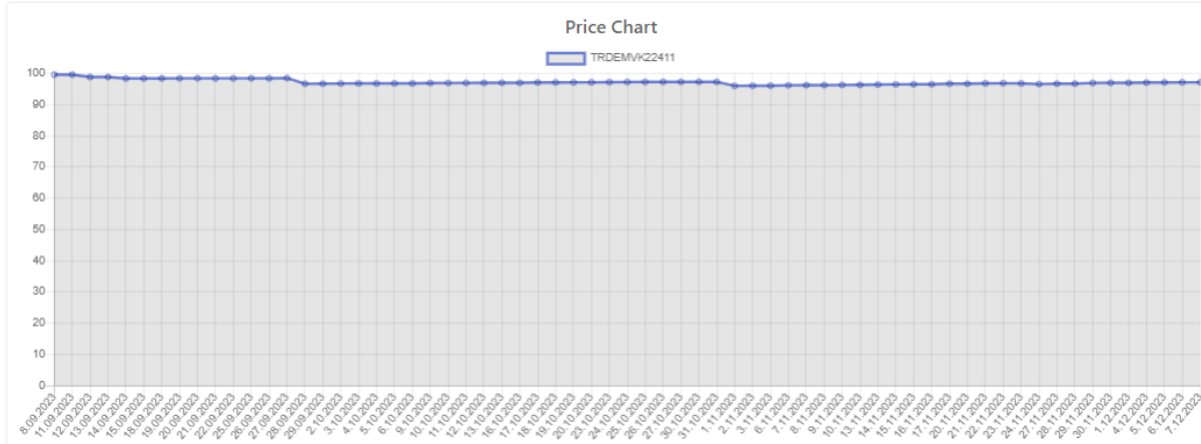
Daily Returns Chart (%)



# TRADE REPOSITORY SERVICES LICENCE CERTIFICATES

Regarding Licence Certificates, last price, trading value, time to maturity (days) and issuer information, 1-month, 3-month, 6-month, 1-year return data and the historical data of last price, trading volume and return covering weekly, monthly, quarterly (3-month), 6-month, Year-to-Date, 1-year, 3-year and 5-year periods consecutively are shared in USD and TRY currencies.

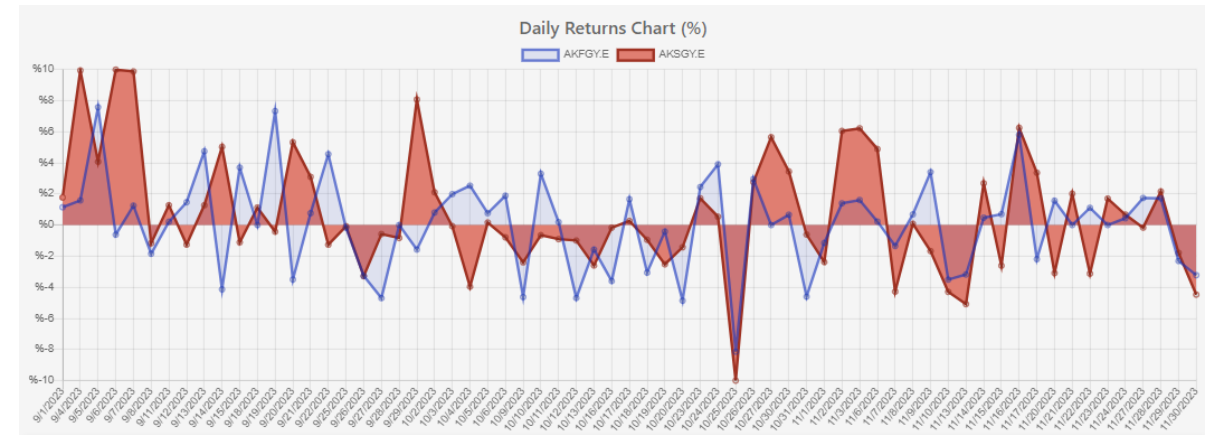
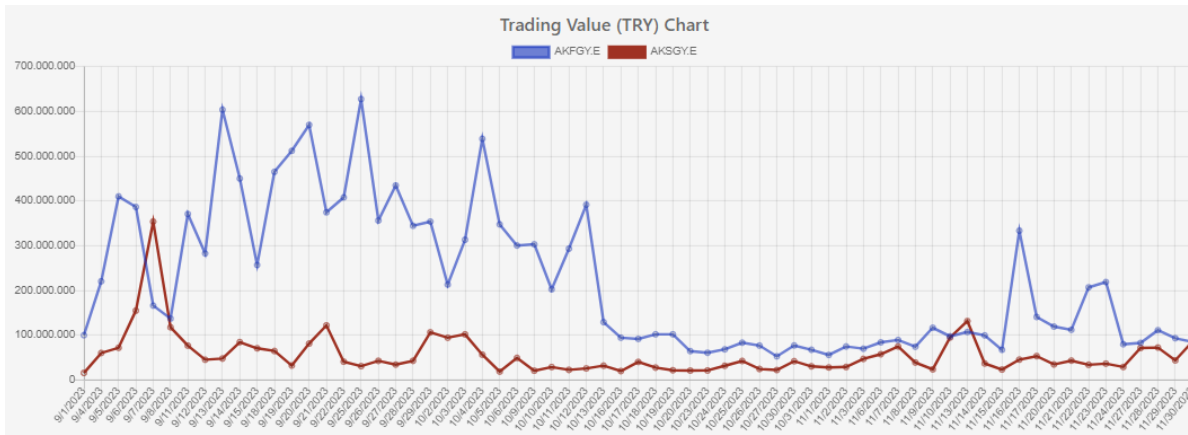
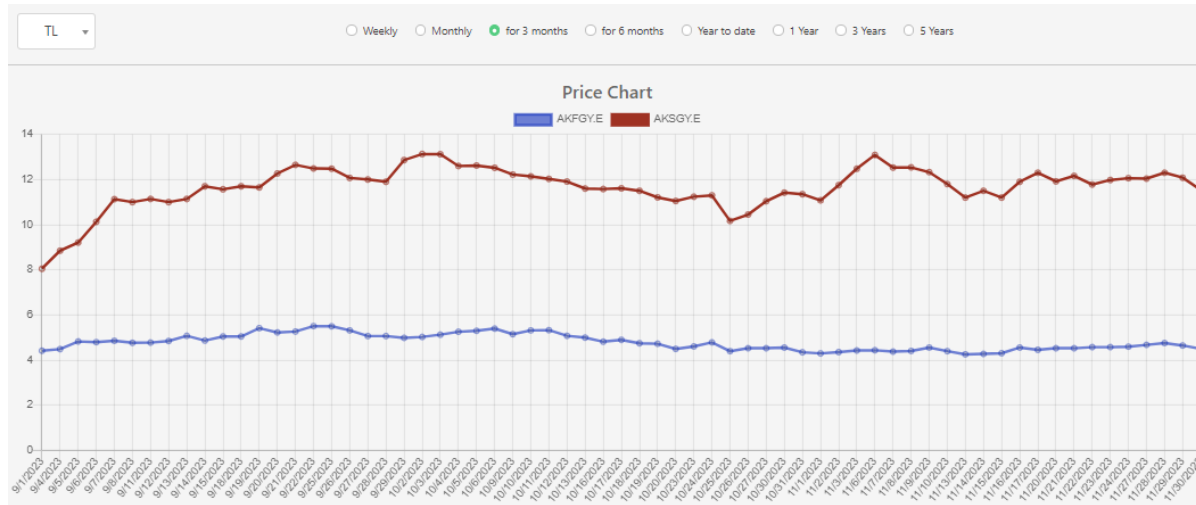
TRDEMVK22411				
Currency	Last Price (TRY)	Trading Value (TRY)	Time to Maturity(days)	Issuer
TL	97,197	1.038.948,25	77	EMLAK VARLIK KIRALAMA A.Ş.
<span style="color: green;">■</span> First Issue Date: 2/22/2023 <span style="color: red;">■</span> Last Value Date: 12/7/2023				
<div style="display: flex; justify-content: space-around;"> <div>1 Month Return <b>+0,95%</b> ↑</div> <div>3 Month Return <b>-2,46%</b> ↓</div> <div>6 Month Return <b>-7,24%</b> ↓</div> <div>1 Year Return <b>+0,00%</b> ↑</div> </div>				
TL ▾ <span style="margin-left: 20px;">○ Weekly</span> <span style="margin-left: 20px;">○ Monthly</span> <span style="margin-left: 20px; color: green;">● for 3 months</span> <span style="margin-left: 20px;">○ for 6 months</span> <span style="margin-left: 20px;">○ Year to date</span> <span style="margin-left: 20px;">○ 1 Year</span> <span style="margin-left: 20px;">○ 3 Years</span> <span style="margin-left: 20px;">○ 5 Years</span>				



# TRADE REPOSITORY SERVICES

## INSTRUMENT COMPARISON DISPLAY

» Instrument Comparison Display includes the comparison data of Real Estate Investment Company Shares shared through last price charts, trading volume charts and daily return charts in USD and TRY currencies.

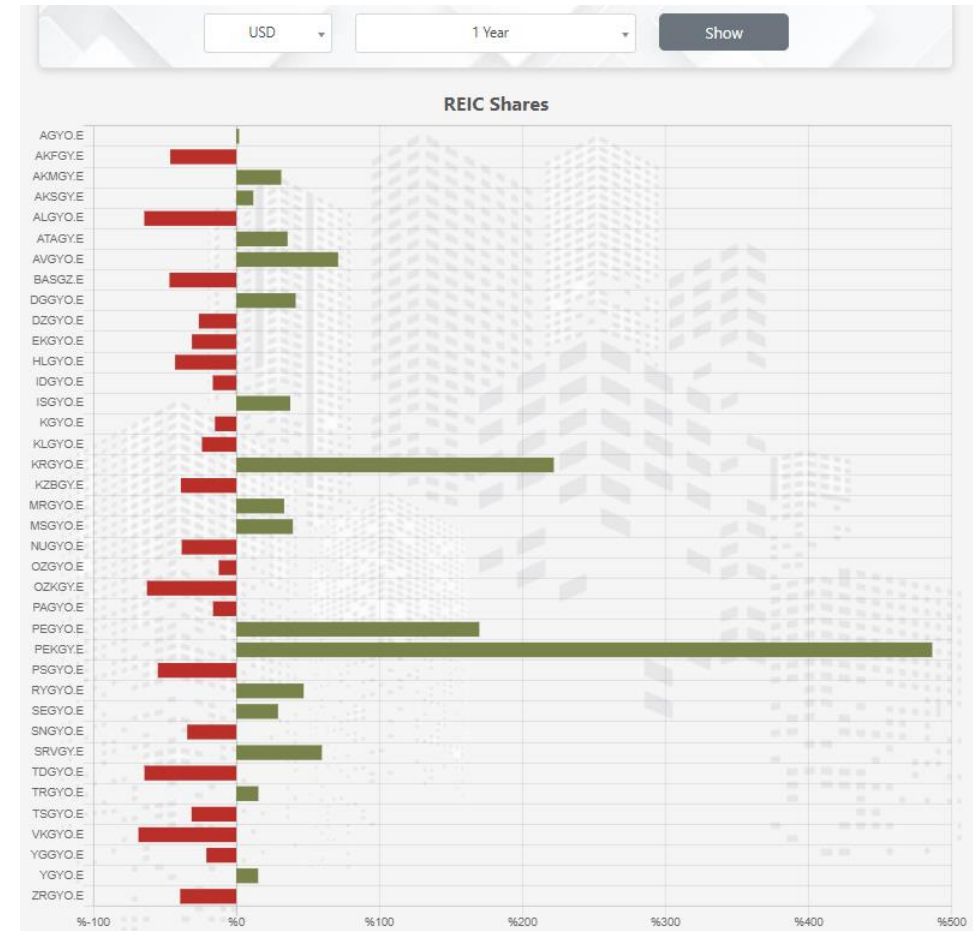
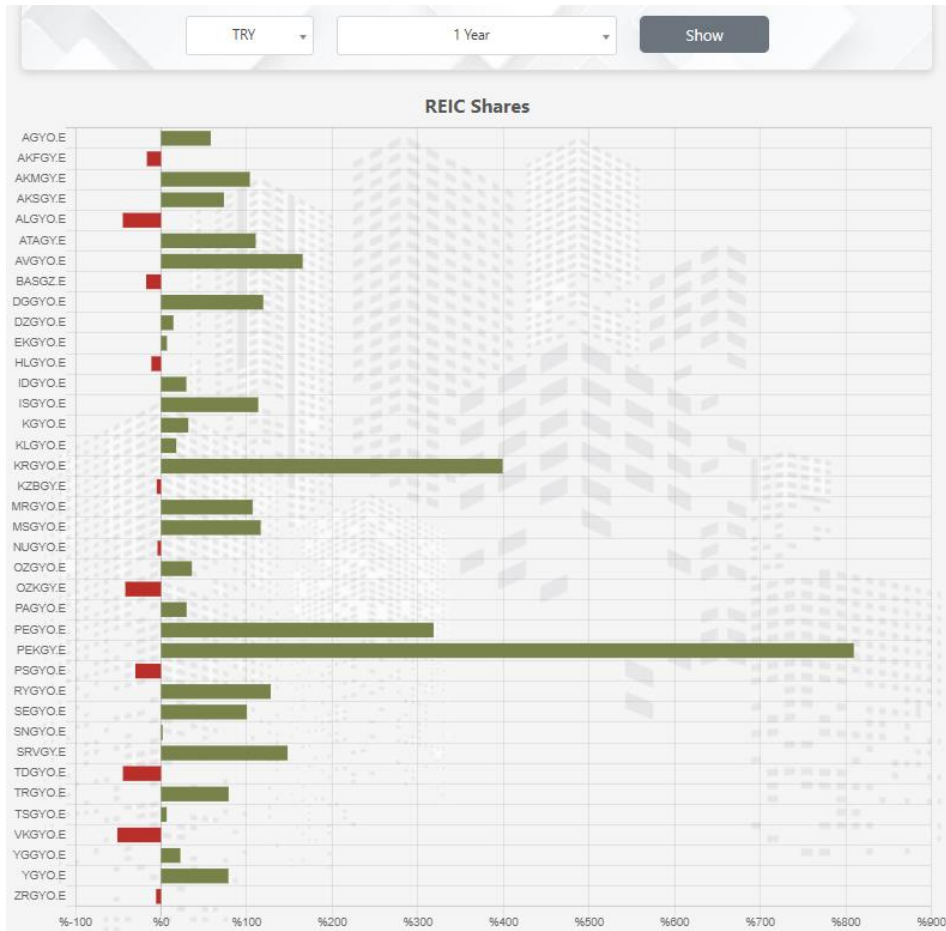




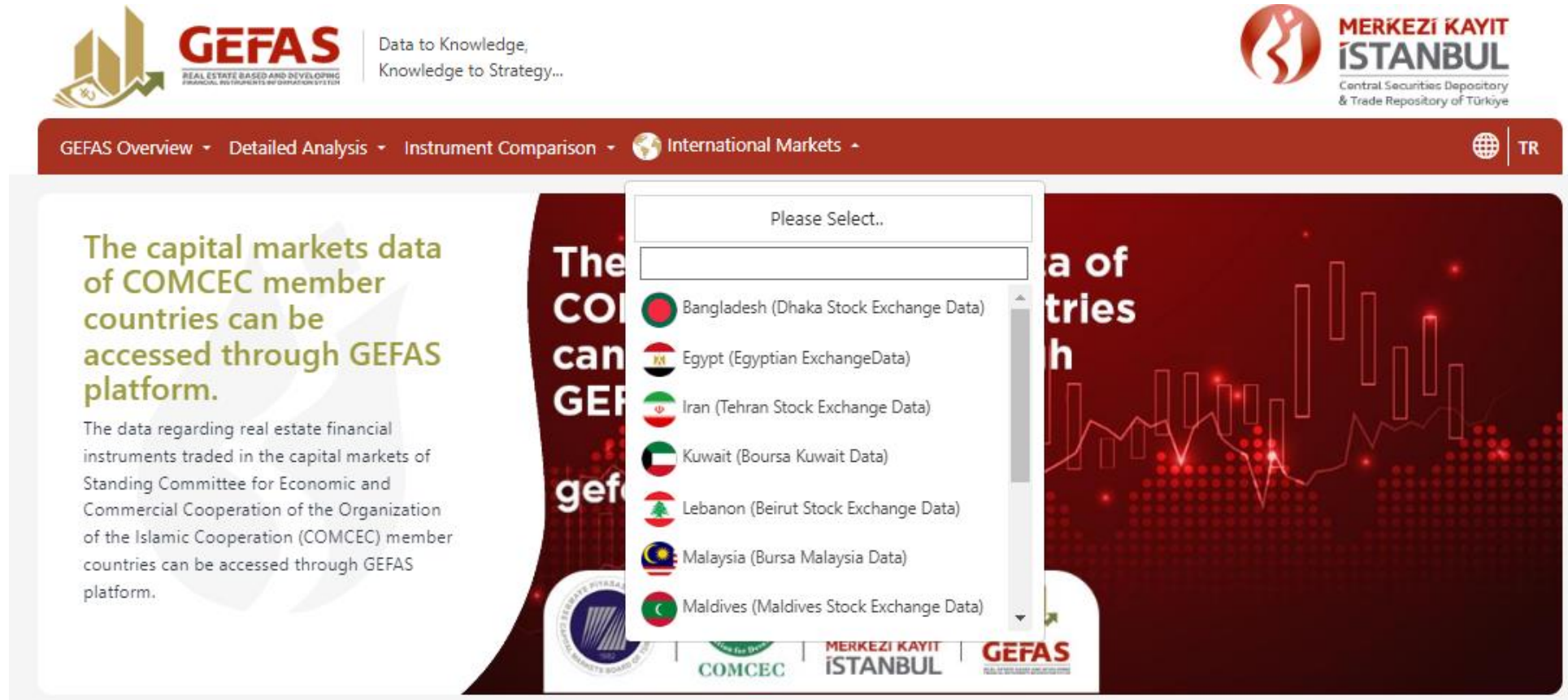
# TRADE REPOSITORY SERVICES

## REIC SHARES RETURN CHART

Regarding REIC Shares, weekly, 1-month, 3-month, 6-month, 1-year return, Year-to Date, 3-year and 5-year is shared on the main page in USD and TRY currencies.



The data regarding real estate financial instruments traded in the capital markets of Standing Committee for Economic and Commercial Cooperation of the Organization of the Islamic Cooperation (COMCEC) member countries can be accessed through GEFAS platform.



**GEFAS** Data to Knowledge,  
Knowledge to Strategy...

**MERKEZİ KAYIT İSTANBUL**  
Central Securities Depository  
& Trade Repository of Türkiye

GEFAS Overview ▾ Detailed Analysis ▾ Instrument Comparison ▾ International Markets ▾ TR

**The capital markets data of COMCEC member countries can be accessed through GEFAS platform.**

The data regarding real estate financial instruments traded in the capital markets of Standing Committee for Economic and Commercial Cooperation of the Organization of the Islamic Cooperation (COMCEC) member countries can be accessed through GEFAS platform.

Please Select..

- Bangladesh (Dhaka Stock Exchange Data)
- Egypt (Egyptian ExchangeData)
- Iran (Tehran Stock Exchange Data)
- Kuwait (Boursa Kuwait Data)
- Lebanon (Beirut Stock Exchange Data)
- Malaysia (Bursa Malaysia Data)
- Maldives (Maldives Stock Exchange Data)

COMCEC MERKEZİ KAYIT İSTANBUL GEFAS

# TRADE REPOSITORY SERVICES

## REIC Shares and REIFs LISTING by TRADING VOLUME

Regarding REIC Shares and REIFs, the top five(5) instruments which have the highest trading value are listed on the main page on daily basis.



### Top REICs by Trading Value

1. EMLAK KONUT GAYRİMENKUL YATIRIM ORTAKLIĞI A.Ş.
2. PEKER GAYRİMENKUL YATIRIM ORTAKLIĞI A.Ş.
3. İŞ GAYRİMENKUL YATIRIM ORTAKLIĞI A.Ş.
4. SİNPAŞ GAYRİMENKUL YATIRIM ORTAKLIĞI A.Ş.
5. PASİFİK GAYRİMENKUL YATIRIM ORTAKLIĞI A.Ş.



### Top REIFs by Trading Value

1. RE-PIE PORTFÖY YÖNETİMİ A.Ş. FIRSAT GAYRİMENKUL YATIRIM FONU
2. QINVEST PORTFÖY YÖNETİMİ A.Ş. RE PIE GAYRİMENKUL YATIRIM FONU
3. RE PIE GAYRİMENKUL VE GİRİŞİM SERM.PORTFÖY YÖNETİMİ A.Ş. AVRASYA STRATEJİK GAYRİMENKUL YATIRIM FONU
4. ALBARAKA PORTFÖY YÖNETİMİ A.Ş. DÜKKAN GAYRİMENKUL YATIRIM FONU
5. MÜKAFAT PORTFÖY YÖNETİMİ A.Ş. ATAŞEHİR METROPOL GAYRİMENKUL YATIRIM FONU

# TRADE REPOSITORY SERVICES

## PUBLIC DISCLOSURE PLATFORM SUMMARY INFORMATION

Regarding REIC shares, summary and shareholder information are shared while regarding REIFs summary information of founders are shared. Users are directed for further information to Public Disclosure Platform (PDP).

Summary Information	Shareholders
Headquarters Address	Çankaya Mahallesi Çankaya Caddesi No: 18/68 Çankaya/ANKARA
Email Address	gyo@atakulegyo.com.tr -- atakulegyo@hs03.kep.tr
Website	www.atakulegyo.com.tr
Company Term	SÜRESİZ
Independent Audit Firm	EREN BAĞIMSIZ DENETİM A.Ş.
Index Memberships	BİST TÜM-100 / BİST TÜM / BİST GAYRİMENKUL YAT. ORT. / BİST KATILIM TUM / BİST MALİ / BİST ANA
Company Sector	MALİ KURULUŞLAR / GAYRİMENKUL YATIRIM ORTAKLIKLARI
Market Segment the Capital Market Instrument is Traded	ANA PAZAR
Ticker	AGYO
General Information	<a href="#">KAP General Information Page</a>

Summary Information	
Founder's Title	AURA PORTFÖY YÖNETİMİ A.Ş.
Term of Fund	Süresiz
Ticker	AUKAK
ISIN Code	TRYTALP00036
Contact Info	Büyükdere Cad.Ievent Loft Binası B.Blok Kat.8 Daire 130 Şişli/İstanbul
Email Address	operations@auraportfoy.com.tr
Independent Audit Firm	İTİMAT BAĞIMSIZ DENETİM A.Ş.
Market Segment the Capital Market Instrument is Traded	NİTELİKLİ YATIRIMCI İŞLEM PAZARI
General Information	<a href="#">KAP General Information Page</a>

Please visit our web site for further information!



[www.mkk.com.tr](http://www.mkk.com.tr)



[@MerkeziKayitTur](https://twitter.com/MerkeziKayitTur)



[Merkezi Kayıt Kuruluşu A.Ş. \(MKK\)](https://www.linkedin.com/company/Merkezi-Kayit-Kurulusu-A.S.-MKK)



[internationalrelations@mkk.com.tr](mailto:internationalrelations@mkk.com.tr)



**MERKEZİ KAYIT  
İSTANBUL**  
CSD of Türkiye